

SCORE DEVICE: SPORTZCAST KIT

Sportzcast is for *OUTDOOR* venues | OCR (backside) is for *INDOOR* venues

Kit Contains:

- Sportzcast Device¹
- Extension Cable²
- USB Cable³
- Serial Cable⁴



Instructions:

1. Plug one end of the **Extension Cable** into your **scoreboard controller** (look for the *output* port – “scoreboard output,” “scoreboard,” “outputs to scoreboards,” etc.)
2. Plug the other end of the **Extension Cable** into the **Serial Cable**
3. Plug the other end of the **Serial Cable** into the **Sportzcast Device**
4. Plug the other end of the **Sportzcast Device** into the **USB cable**
5. Plug the other end **USB cable** into the **VPU (computer)**



Controller → Extension Cable → Serial Cable → Sportzcast Device → USB Cable → VPU (Computer)

SCORE DEVICE: OCR KIT

OCR is for *INDOOR* venues | Sportzcast (backside) is for *OUTDOOR* venues

Kit Contains:

- IP Camera¹
- Mounting Arm²
- Cat6 cable³



Instructions:



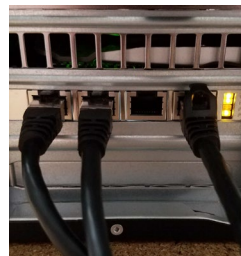
1. Secure the mounting arm to a wall (mounting screws not included). If passing cable through the wall, you can feed it through the arm. Next, attach the mounting plate to the top or bottom of the camera.



2. Attach the camera to the mounting arm by screwing it on until tight – do not over tighten! Once attached, aim the camera at your scoreboard.



3. Plug one end of the Cat6 cable into the back of the camera.



4. Plug the other end of the Cat6 cable into an open port on the VPU. The port's LED should light up to indicate a connection.

5. Call our Support team at (877) 339-7529 for final setup and aiming of the camera.